



Harland ProtectUPS®- Industrial Water Industry WIMES 3.07 UPS

ProtectUPS®- *EXTREME XL*

Harland ProtectUPS® - a range of fully protected and integrated IP54/IP55 WIMES 3.07 compliant UPS systems. The Harland ProtectUPS® ranges from 10kVA and up to 100kVA to support critical equipment on water and sewage treatment sites in the event of mains failure.

10-100kVA UPS Module

Viewing Window

Document Wallet

Inlet Vents

UPS Module & Batteries
100% Maintainable on Runners from the Front

Top Gland Plate

Outlet Fans

IP54/55 Enclosure

Customer Connection

Back to Wall Installation

Bottom Gland Plate

Fixing Plinth



- » WIMES 3.07 compliant
- » IP54 (IP55 available)
- » 10kVA - 100kVA
- » Single (20kVA) or Three phase
- » Battery Autonomy - as required
- » Designed for use in Extreme environments
- » Manufactured in accordance with BS EN60529,1992, IP5X & IPX4
- » Front Access, Back to wall Installation, Easy Maintenance





Harland ProtectUPS®- Industrial Water Industry WIMES 3.07 UPS

ProtectUPS®- *EXTREME XL*



REFERENCE SITES





Harland ProtectUPS® - Industrial Water Industry WIMES 3.07 UPS

ProtectUPS® - *EXTREME XL*

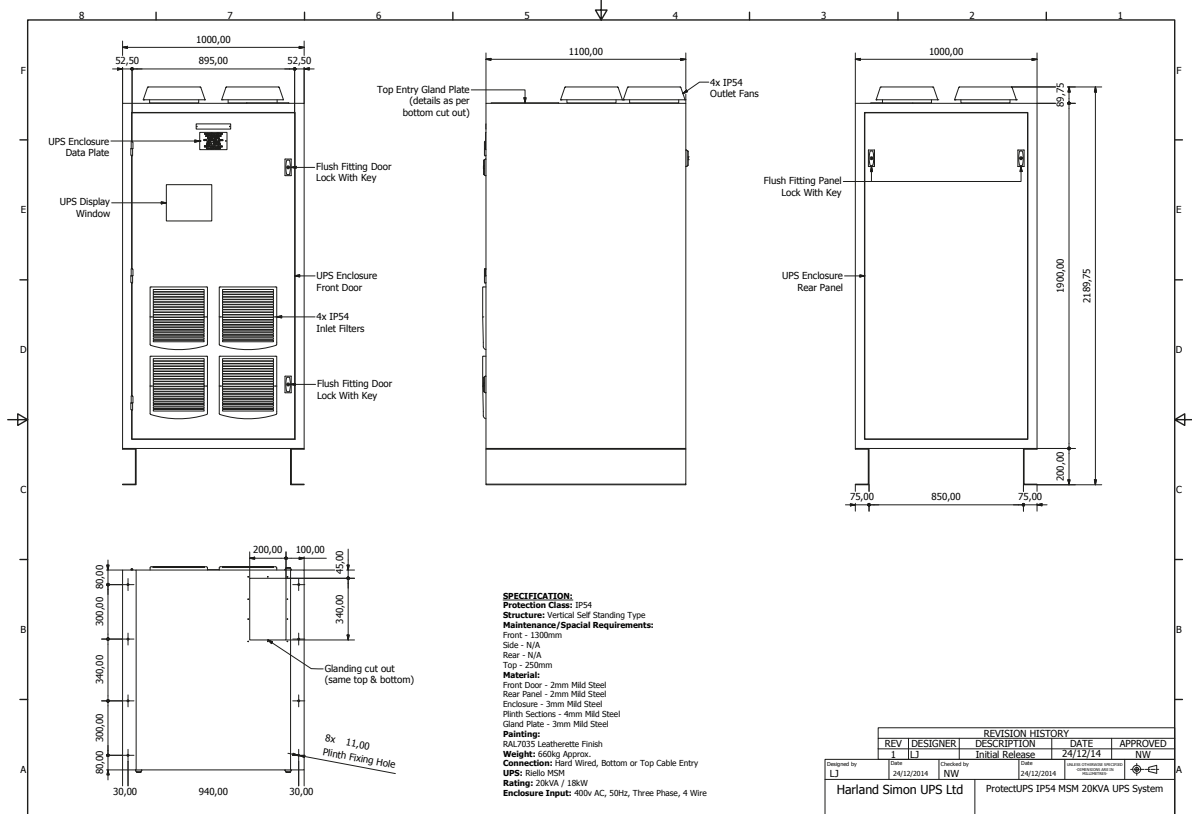


OPTIONAL FEATURES

- WIMES 3.07 Compliant
- IP54 Indoor/IP55 Outdoor
- Easy Maintenance
- Long Life Battery
- Wide Capacity Range
- Variety of Communication Options

APPLICATIONS

- SCADA/PLC
- ICA/MCC
- Pumps/Actuators/Motors
- UV Systems
- Security





Harland ProtectUPS® - Industrial

Water Industry WIMES 3.07 UPS

Technical Specification

MODEL	HPU-I-XXXX
Harland Reference	Harland ProtectUPS® EXTREME XL
Part Number	HPU-I-XXXX (unique part number for each specific version)
Model	True on-line double conversion UPS with internal static & manual bypasss, also available as convertor
Type	IP54 Protected UPS system IP55 Upgrade for outside installation
Temperature Range	0°C to +40°C
Rating	10kVA up to 100kVA Selectable 10/15/20/30/40/60/80/100kVA
Autonomy	Dependant on load - normally 5 to 30 minutes (up to 40kVA internal) Longer runtimes via external battery cabinet
Input Supply	230VAC single phase (10kVA to 20kVA) 400VAC three phase (10kVA to 100kVA)
Output Supply	230VAC single phase (10kVA to 30kVA) 400VAC three phase (10kVA to 100kVA)
Input Protection	None. Customer to supply external supply MCB (optional input MCB)
Output Protection	None. Customer to supply external load MCB or distribution board (optional output MCB)
Battery Type	Internal battery: 5 or 10 year life VRLA or 10+ year life Lead Crystal®
Battery Capacity	Multiple strings of internal 7/9AH
Recharge Time	Normally 90% within 24 hours
Charger Rating	Normally 10% of battery AH
Cooling	Higher reliability fans, redundancy and fan fail alarm options
Controls	Internal UPS module controls
Display	Internal mimic display with status, meters, alarms, etc.
Alarms	Internal = mimic display alarms External = optional relays, RS232, SNMP, Modbus, etc.
Enclosure	Welded painted sheet steel enclosure with basemounted cable gland plate, air inlet at front, back to wall installation and air outlet at top
Maintenance	UPS module is fitted on runners which slides forward for easy maintenance
Paint Finish	RAL7035 light grey (other colours on request)
Standards	CE marked compliant with WIMES 3.07
Dimensions	2100mm H x 1000mm W x 1100mm D
Weight	From 400kg up to 1000kg
Warranty	12 months (upgradeable to 36 months or longer)
Cable Entry	Undrilled bottom entry gland plate (top as option)
Options	*Internal or external manual bypass switch *Internal input & output MCB *Dual redundant cooling and fan fail alarm *IP55 outdoor protection *Relay alarm card *SNMP/Ethernet interface *MODBUS/JBUS BMS interface *Input or output isolation transformers or 110VAC output *External long runtime battery packs, heater and thermostat

Harland Simon UPS Ltd • Bond Avenue • Bletchley • Milton Keynes • MK1 1TJ
T: 01908 56 56 56 • E: enquiries@hsups.co.uk • W: harlandsimonups.com

